

CERTIFICATES



PRODUCT

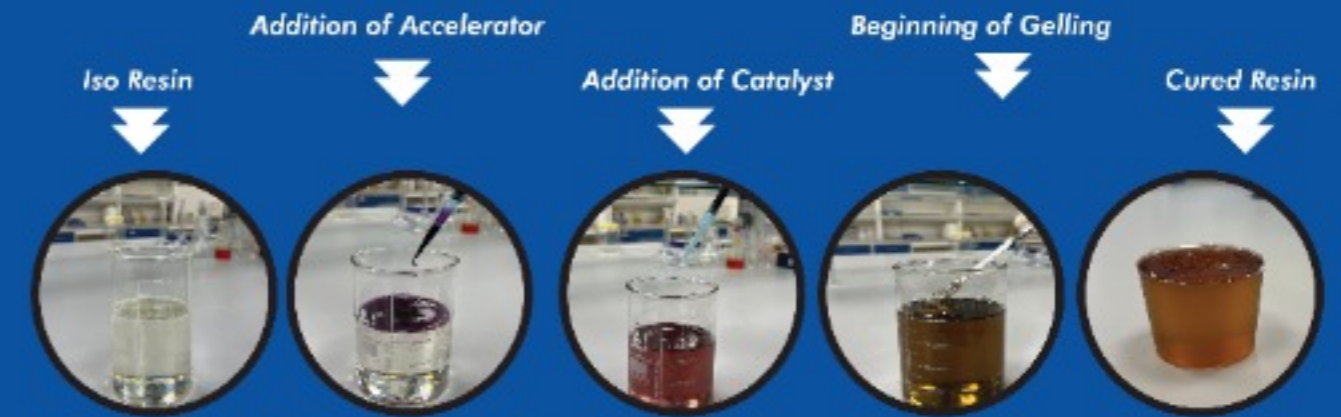
- Ortho Resin
- Iso Resin
- Vinyl Ester Resins
- Pigmented Gelcoats
- Clear Gelcoat
- Thixotropic Resins
- DCPD Resin
- Terephthalic Resin
- NPG Resins
- NPG Gelcoats
- Iso Food Grade Resin
- Vinyl Ester Fire Retardant Resins
- Lamination Resins
- Marble Grade Resins
- Iso Fire Retardant Resins

APPLICATION

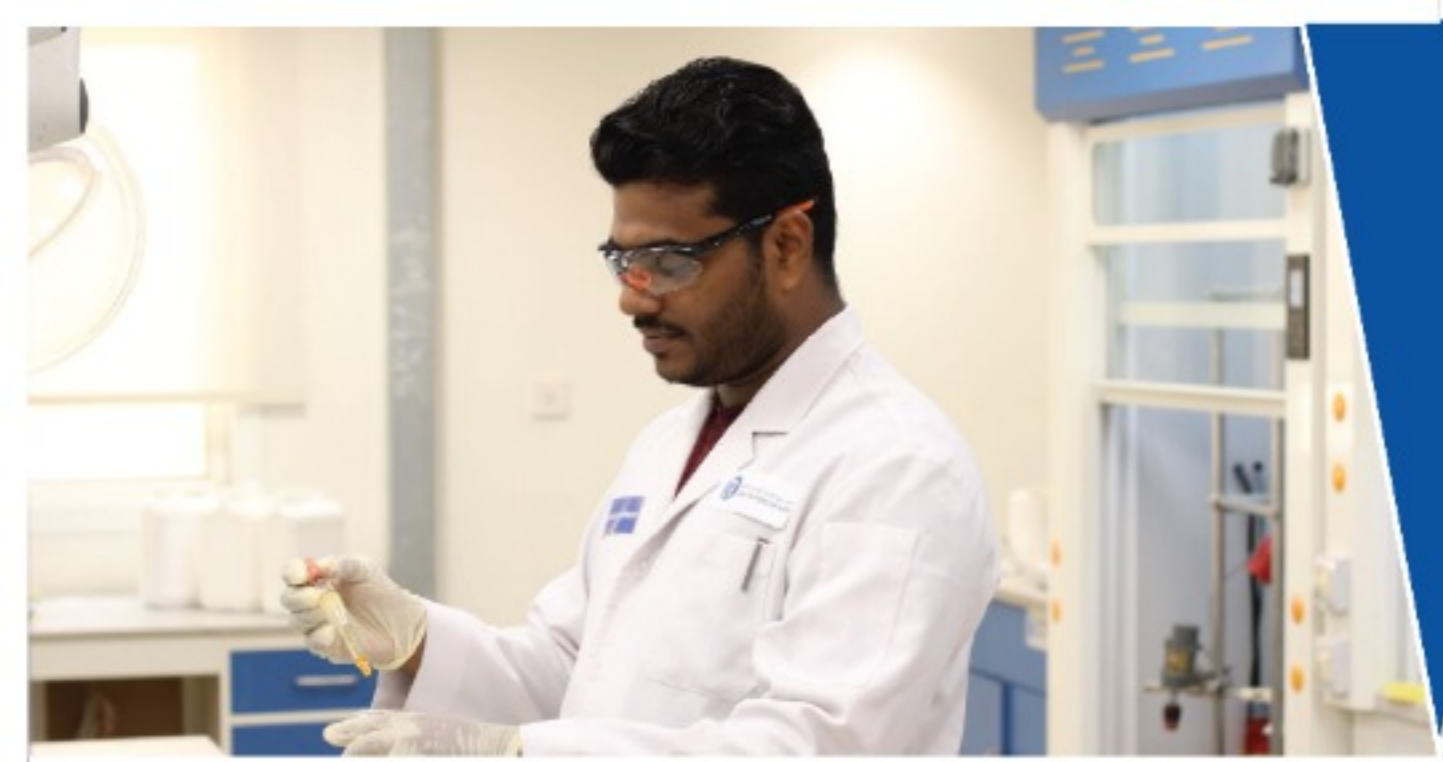
- GRP (Pipe, Coupling, Sub - Linear Shaft, Cover Slab, Banching & Gully)
- GRP (Pipe, Coupling, Sub - Linear Shaft, Tiles for Roofs
- Polymer Concrete Products
- Domes
- Boat and Duct
- Storage Tanks
- Decorative Work & Accessories
- Moulds and Laminations



RESIN CURING PROCESS



There are 10 production lines with the latest modern technology to satisfy customer needs with an annual capacity equal to 16,000 tons

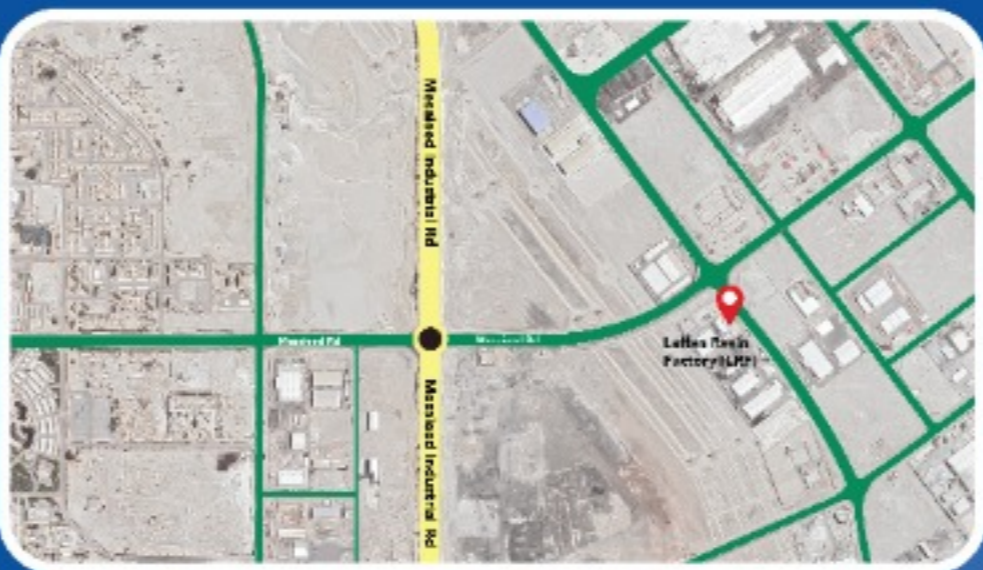


مصنع لفان لإنتاج الرز
LAFFAN RESIN PRODUCTION FACTORY

At LRF, our fully automated batch process undergoes continuous monitoring control to produce high-quality products consistently.

The LRF team comprises incredibly talented, experienced, and knowledgeable personnel who undergo in-house and third-party training to ensure the advancements of our company.

At LRF, we boast a world-class laboratory with rigorous quality control procedures which ensure our products meet ISO and ASTM standards.



STANDARD DELIVERY MODES

- 20 Ton Tankers for Bulk Delivery Locally
- 20 Ton Iso Tanks for Export Purposes
- 220 Kg Steel or HDPE Drums
- 1 Ton IBCs (SS and HDPE)

مصنع لفان لإنتاج الرز
LAFFAN RESIN PRODUCTION FACTORY

C.R. No.: 81387
Tel.: +974 4450 9433
Fax.: +974 4462 5559
E-mail: info@lrf.com.qa
www.lrf.com.qa



مصنع لفان لإنتاج الرز
LAFFAN RESIN PRODUCTION FACTORY

Eng. Ramy Barhoom
Factory Manager

Mobi: +974 5582 8142
Tel: +974 4450 9433
Fax: +974 4462 5559
Email: ramy@lrf.com.qa