



مصنع لفان لإنتاج الرز  
LAFFAN RESIN PRODUCTION FACTORY

Page | 1

# Laffan Resin Production Factory



**Contact us:**

Light Industrial Area, street # 709, Zone No: 92, Mesaieed Industrial zone, Qatar

PO Box: 1985. T: (+974) 445 09433, E: [info@lrf.com.qa](mailto:info@lrf.com.qa)

Factory Manager M: (+974) 55828142

## Table of Contents:

➤ Company Profile .....	2
➤ Our Products .....	3
➤ Product Descriptions and Specifications.....	3
➤ Product Properties.....	3
➤ Main Applications of unsaturated polyester resin .....	4
➤ Quality Control and Assurance .....	5
➤ Integrated Management Policy.....	6
➤ Organization Chart.....	7

### • COMPANY PROFILE:

Laffan Resin Production Factory, established in the year 2020. The annual production capacity of the factory is 16,000 metric tons.

Laffan Resin Production Factory has 10 production lines equipped with the latest modern technology to satisfy customer needs. We also have an in-house laboratory and a rigorous quality control process to ensure the quality of our product.

Unsaturated polyester resin is one of the most popular thermosetting resins, having a high thermal and heat stability, low shrinkage, and good mechanical strength, but it is relatively more affordable when compared to other types of resins that offer similar performance.

#### Contact us:

Light Industrial Area, street # 709, Zone No: 92, Mesaieed Industrial zone, Qatar

PO Box: 1985. T: (+974) 445 09433, E: [info@lrf.com.qa](mailto:info@lrf.com.qa)

Factory Manager M: (+974) 55828142





## • OUR PRODUCTS:

### ➤ Product Descriptions and Specifications:

Three main types of polyester resins are manufactured at our factory - Ortho Resin, Iso Resin, and Vinyl Ester Resin. Ortho resin offers a cost/performance benefit with good mechanical properties. Iso resin provides improved chemical, heat, and moisture resistance as well as higher tensile properties when compared with ortho resin. Vinyl ester resin is formulated for maximum corrosion resistance to most chemicals, and it is heat resistant and blended for durability, features excellent impact strength and high tensile elongation. Our gelcoat is produced in the factory as well.

### ➤ Product Properties:

Refer to the Technical data sheets.

**Specific properties can be adjusted according to the customer's requirements.**

#### Contact us:

Light Industrial Area, street # 709, Zone No: 92, Mesaieed Industrial zone, Qatar

PO Box: 1985. T: (+974) 445 09433, E: [info@lrf.com.qa](mailto:info@lrf.com.qa)

Factory Manager M: (+974) 55828142





➤ Main Applications of unsaturated polyester resin:

- GRP (Glass Reinforced Plastic)/ FRP (Fiber-reinforced Plastic)
- Polymer concrete products
- Tiles for roofs
- Bathrooms accessories
- Decorative works
- Tabletops
- Chemical tanks/pipelines
- Chemical equipment
- Boats and duct
- Construction of other items with high structural performance
- Items that are subject to extremely severe conditions under high mechanical loads

**Contact us:**

Light Industrial Area, street # 709, Zone No: 92, Mesaieed Industrial zone, Qatar

PO Box: 1985. T: (+974) 445 09433, E: [info@lrf.com.qa](mailto:info@lrf.com.qa)

Factory Manager M: (+974) 55828142





## • TECHNOLOGY:

LRPF is equipped with the latest modern technology to meet our client's satisfaction by producing consistent and high-quality products adhering to the latest international standard.

There are 10 production lines that can be adjusted according to customers' requirements.

## • QUALITY CONTROL AND ASSURANCE:

Laffan Resin Production Factory is committed to producing high-quality unsaturated polyester resin, which are manufactured in accordance with in-house developed formulation. We have control measures in place to ensure the consistency and quality of our products. Our testing laboratory ensures that the characteristics of our resin adhere to the standards, as well as meet customer specifications.

### Laboratory Tests

- Acid Value
- Viscosity
- Density at liquid state
- Gel time
- Peak Exothermic Temperature
- Time to Peak
- Non-volatile content
- Flexural Strength
- Flexural modulus
- Heat Deflection Temperature
- Barcol Hardness
- Tensile strength
- Tensile modulus
- Elongation at break
- Color of resin
- Determination of water absorption
- Determination of compressive properties
- Density and Specific Gravity (Relative Density) of Plastics
- Determination of the mineral-filler content

### Contact us:

Light Industrial Area, street # 709, Zone No: 92, Mesaieed Industrial zone, Qatar

PO Box: 1985. T: (+974) 445 09433, E: [info@lrf.com.qa](mailto:info@lrf.com.qa)

Factory Manager M: (+974) 55828142



## مصنع لفان لإنتاج الرزین LAFFAN RESIN PRODUCTION FACTORY

### INTEGRATED MANAGEMENT SYSTEM POLICY (QUALITY, HEALTH, SAFETY AND ENVIRONMENT)

The management of **LAFFAN RESIN PRODUCTION FACTORY** is committed to implement and maintain an Integrated Management System compliant to ISO 9001:2015, ISO 14001:2015 and ISO 45001:2018 standards. To achieve this, the company has established its own objectives and will review the performance periodically to ensure the continuing suitability for its purpose.

**LAFFAN RESIN PRODUCTION FACTORY** is committed to Customer satisfaction, superior health & safety for employees and interested parties, protection of the environment including prevention of pollution are the key milestones we intend to achieve by complying with legal and other applicable requirements and committing ourselves to Quality, Health, Safety and Environment Standards.

**LAFFAN RESIN PRODUCTION FACTORY** is committed to:

- Meet the needs and expectations of interested parties.
- Defining plans and deliverables against the expected quality output.
- Meet the needs and expectations of interested parties.
- Upholding consistency in its objectives while incorporating new changes for future challenges.
- Promoting a sense of responsibility in QHSE among all employees.
- Treating employees as "Important Assets" of the company, therefore Laffan Resin Production Factory will provide safe and healthy working conditions for the prevention of work-related injury and ill health as utmost priority.
- Eliminate hazards and reduction of HSE risks by completing the risk assessments and using the appropriate hierarchy of controls.
- Encourage consultation and participation of employees on HSE program.
- Ensuring a continuous and effective means of communication on all matters of Quality, Health, Safety and Environment within the organisation and relevant interested parties.
- Complete environmental assessments for aspects and impacts of all the activities that the Laffan Resin Production Factory may undertake including facilities, equipment and work practices that have the least environmental impact.
- Adhering to responsible disposal of waste and best resin business practices to achieve objectives.
- Maintain risk and opportunities register and monitor the effectiveness of the control measures to achieve the utmost Quality, Health, Safety and Environment standards.

The management of **LAFFAN RESIN PRODUCTION FACTORY** assures that this IMS Policy is communicated, understood, and implemented within the organization and available for relevant interested parties.

  
Ramy Barhowm  
Factory Manager

App. 02/ Rev.00/ 01<sup>st</sup> Nov 2020

#### Contact us.

Light Industrial Area, street # 709, Zone No: 92, Mesaieed Industrial zone, Qatar

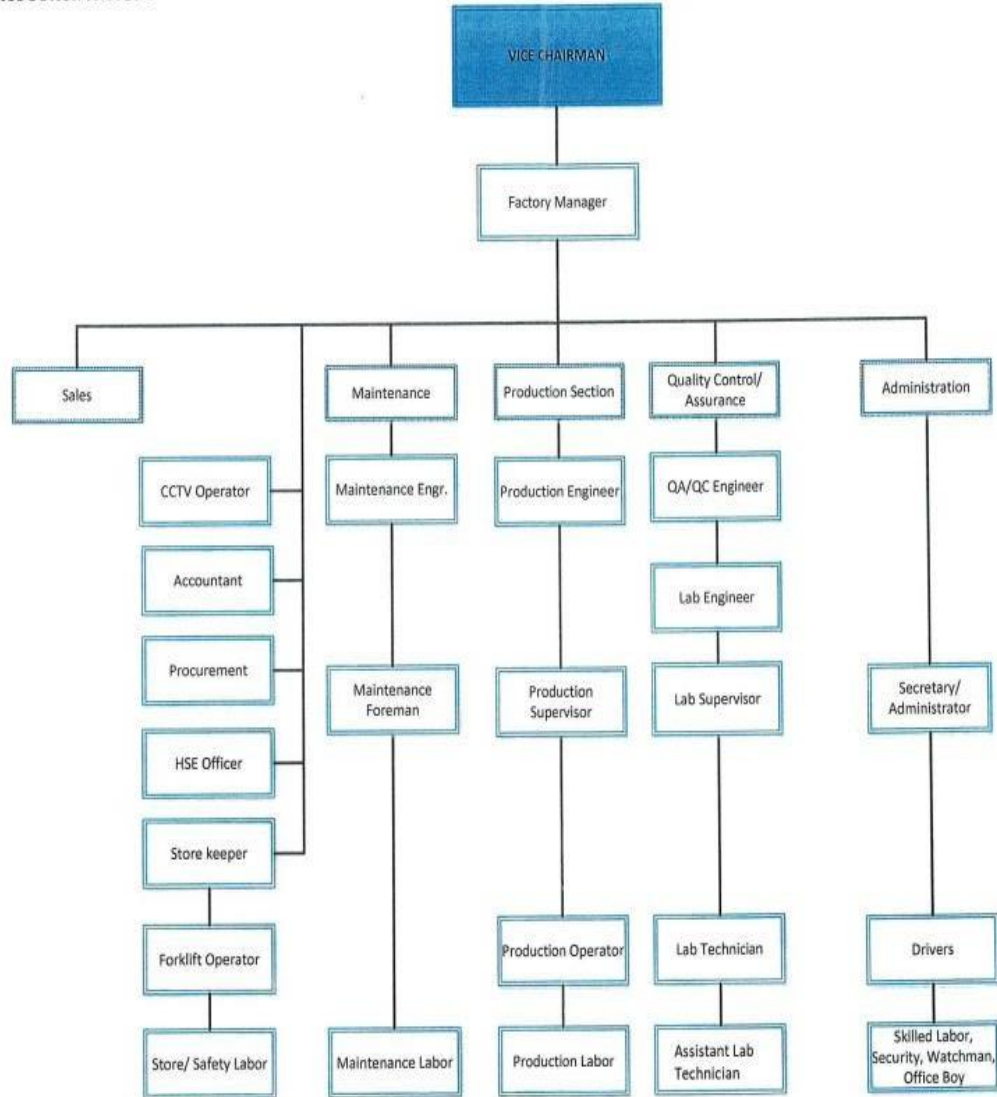
PO Box: 1985. T: (+974) 445 09433, E: [info@lrf.com.qa](mailto:info@lrf.com.qa)

Factory Manager M: (+974) 55828142





LAFFAN RESIN PRODUCTION FACTORY  
ORGANIZATION CHART



**Note:**

Corporate Support Department from the Head Office provided services to the company.

Reviewed by:

  
 \_\_\_\_\_  
**RAMY BARHOWM**  
 Factory Manager

Approved by:

  
 \_\_\_\_\_  
**ABDUL HAMEED M.T. MOSTAFAWI**  
 Vice Chairman

ORG 016|Rev. 01 | Dated 1 June 2023

**Contact us:**

Light Industrial Area, street # 709,Zone No: 92, Mesaieed Industrial zone, Qatar

PO Box: 1985. T: (+974) 445 09433, E: [info@lrf.com.qa](mailto:info@lrf.com.qa)

Factory Manager M: (+974) 55828142

